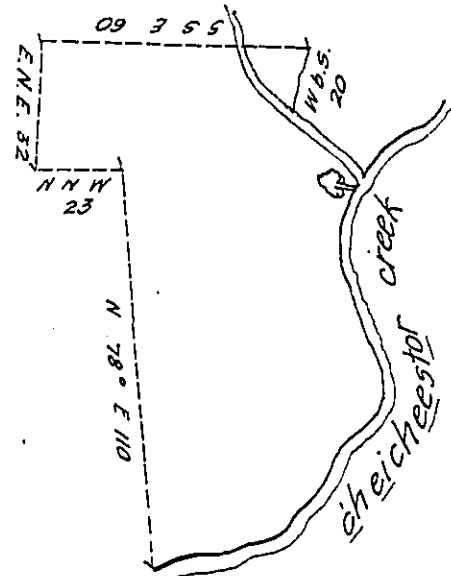


July the 2 1684 ~~1683~~

Surveyed for W<sup>m</sup> Clayton two parcels of land lying in the township of Cheicheester the one parcel ~~beginning~~ beginning at a marked poste standing by the riverside being the corner mark of James brown and from thence running along by the fence side on severall courses to ~~the~~ a marked white oak standing by the 5<sup>d</sup> fence and from thence N.N.W. 330 perch to a marked hickrey and from thence W.b.s 47 perch to a marked poste from thence S.S.E. along John Beasors line S5E 360 perch to a marked poste and from thence along the fence on severall courses to a marked poste standing by the river side and along up the river to the first menchered poste containeng ~~the~~ ~~the~~ 107 acres.



The other parcel lying on the west side of Cheechistor creek beginning at a marked poste being the corner mark of phillip rummors land and from thence running N.N.W. 23 perch to a marked poste from thence ~~the~~ N 78 degrees east 110 perch to a red oak standing by the creekside from thence up the creek on severall courses to ~~the~~ a marked white oak standing by the creekside and at the mouth of a run and from thence running by the 5<sup>d</sup> run on severall courses to ~~the~~ a marked red oak from thence W.b. s. 20 perch to a marked poste from thence S.S.E. 60 perch to a marked poste and from thence E.N.E. 32 perch to ~~the~~ ~~the~~ first menchered poste containing 47 acres also within the township of Cheicheester one acre of meadow ground ~~is~~ the whole amounting to 155 acres P.-

Charles Ashcom

IN TESTIMONY that the above is a copy of the original remaining on file in the Department of Internal Affairs of Pennsylvania, made conformably to an Act of Assembly approved the 16th day of February, 1833, I have hereunto set my Hand and caused the Seal of said Department to be affixed at Harrisburg, this eighth day of May 1909

*Henry Horvick*  
Secretary of Internal Affairs.